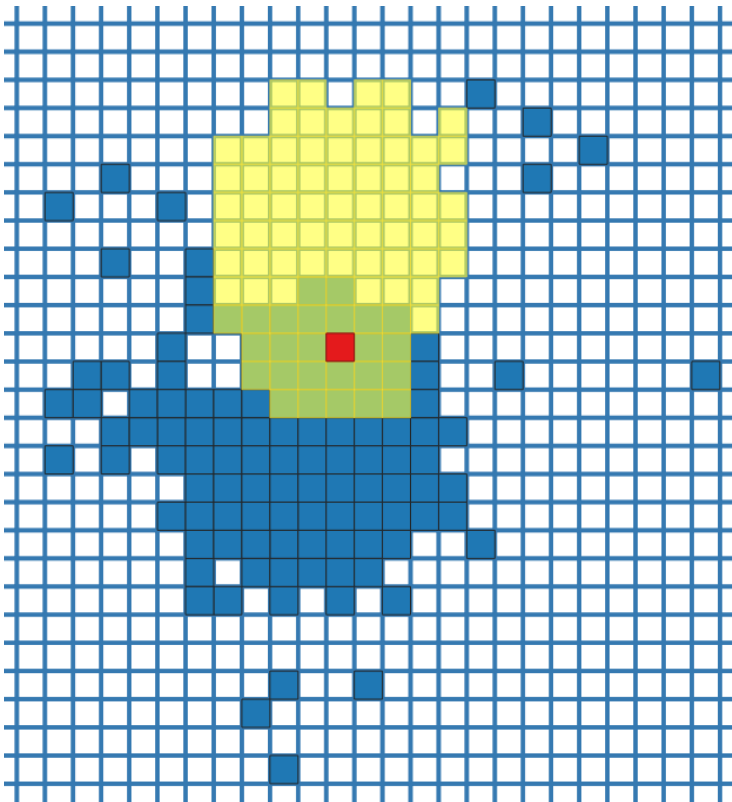


## Exploring WFIPS Fire Sheds and Fire Plains

WFIPS Fire Sheds and Fire Plains can be used to help fire planners understand how fires are likely to move across the landscape and affect nearby areas. WFIPS Fire Sheds are designed to show the regions around an area of interest where fire ignitions could burn into the area of interest. For example the Fire Shed for a subdivision is an area surrounding the subdivision where fire ignitions have the potential to burn into the subdivision. Fire Sheds help fire planners understand where ignitions may threaten something they care about. WFIPS Fire Plains are designed to show the region around an area of interest that could be affected by the ignition from that area of interest. For example the Fire Plain for a drainage would include all the areas around the drainage that might be affected by an ignition in the drainage. Fire Planes help fire planners understand where fires might burn to so they can plan fuel treatments and modify resources accordingly.

The WFIPS Fire Sheds and Fire Plains are derived from the FSIM runs used to develop the WFIPS Large Fire database. They are based on WFIPS Cells. For each FSIM fire it is recorded in the Fire Shed database the WFIPS Cell the fire originates in and each WFIPS Cell the fire burns into. Hence the database contains the WFIPS cell and Origin WFIPS Cell, the number of times a fire originating in the Origin WFIPS Cell burns into the WFIPS Cell. In addition the Number of fires that Originate in each of the WFIPS Cells is also recorded (unless this number is zero).

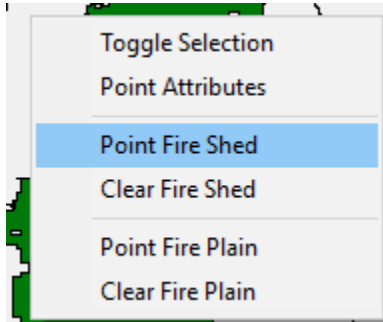
### What do the Fire Sheds and Fire Plains look like?



The Fire Plane (yellow) and Fire Shed (blue) for WFIPS Cell 1512834 (red). This WFIPS Cell is in CA\_CA\_007.

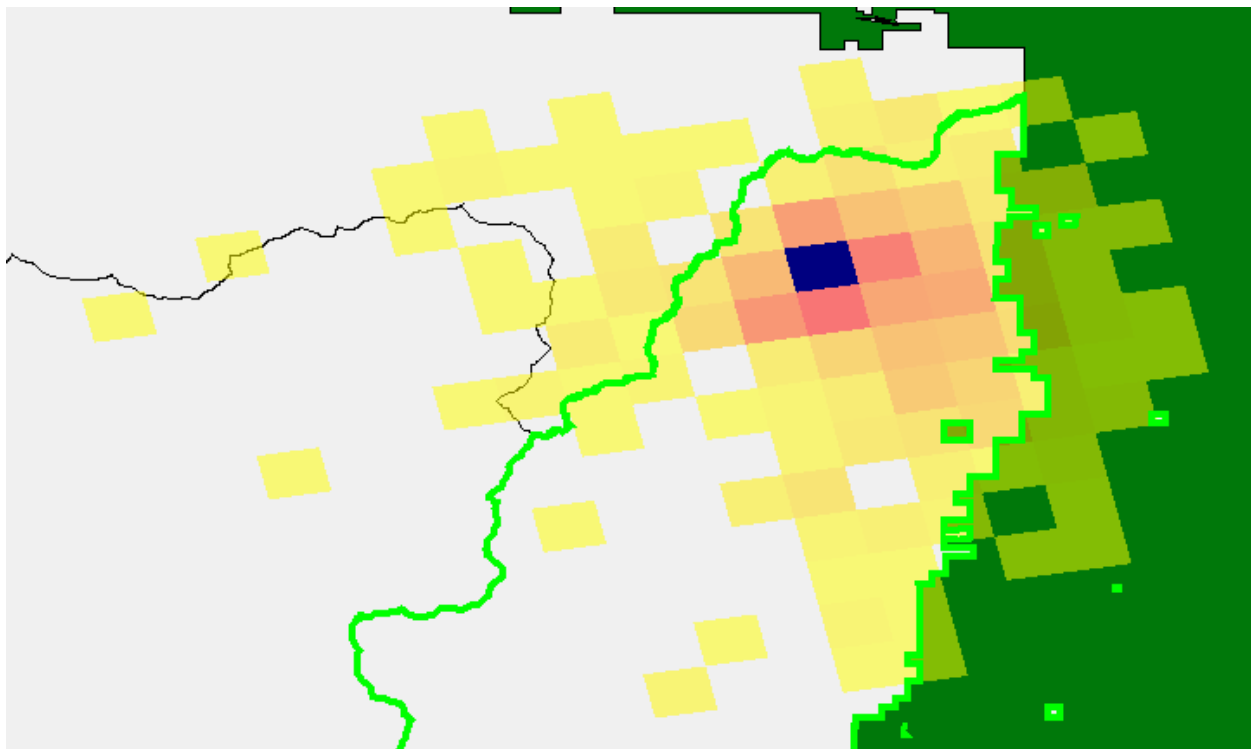
## Viewing WFIPS Fire Sheds and Fire Plains in WFIPS

The WFIPS Fire Shed and Fire Plain for a WFIPS cell can be viewed by right clicking on the WFIPS cell and selecting “Point Fire Shed” or “Point Fire Plain”.

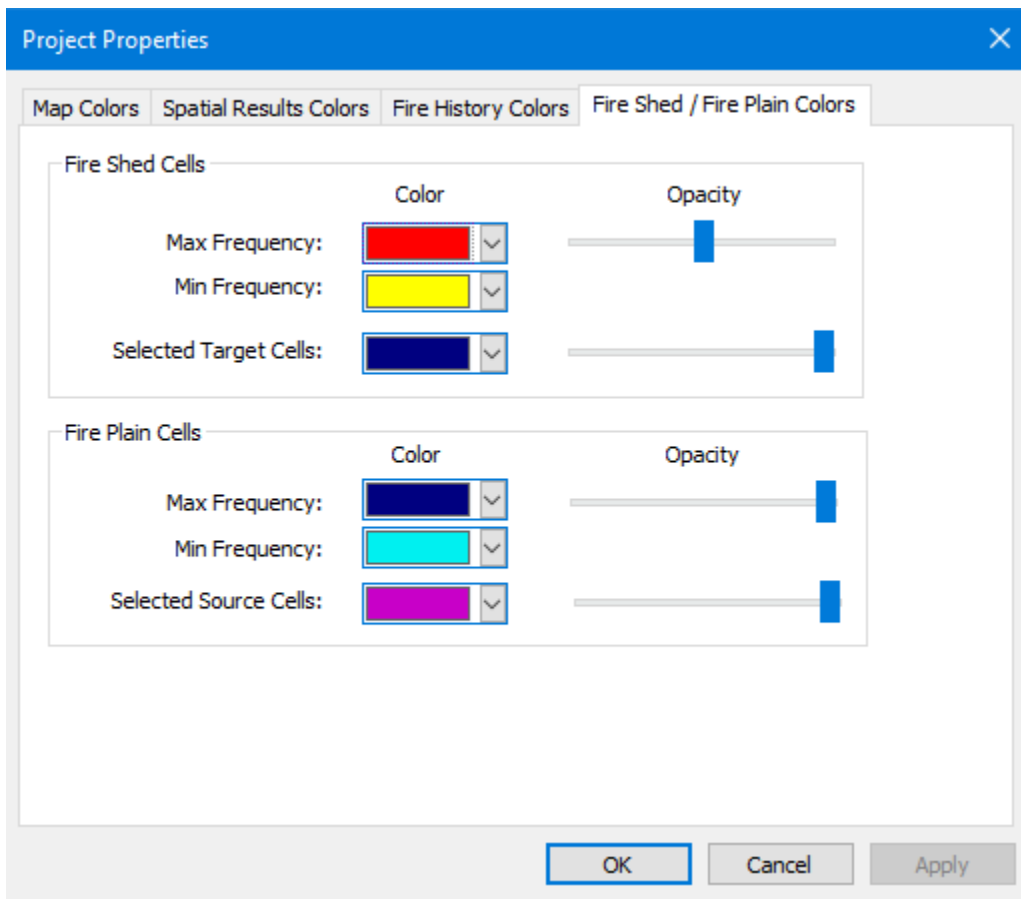
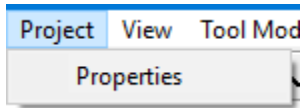
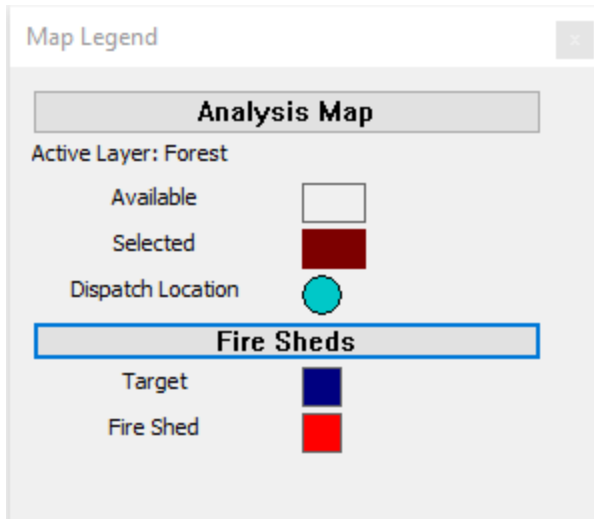


The Fire Sheds and Fire Plains for additional WFIPS cells can be added to the map in the same manner. “Clear Fire Shed” and “Clear Fire Plain” removes all the displayed Fire Sheds and Fire Plains.

Fire Shed:

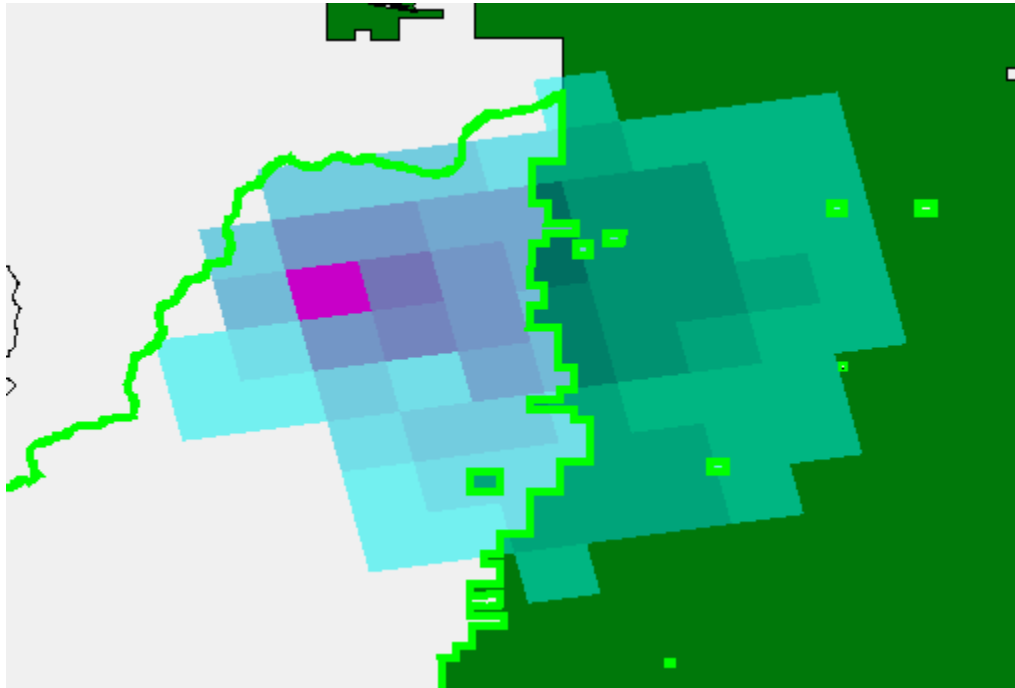


The WFIPS Cell clicked is displayed in dark blue. The red to yellow WFIPS cells show the Fire Shed where the red cells were burned by more FSIM fires than the yellow cells. The color and opacity for the displayed Fire Sheds can be changed by clicking “Fire Sheds” in the Map Legend or clicking Properties under Project in the WFIPS Menu.



Changes made to the Project Properties are saved for future runs.

Fire Plain:



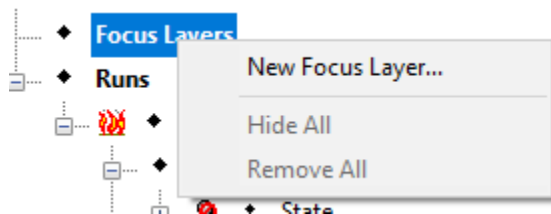
The WFIPS Cell clicked is displayed in dark pink. The dark blue to cyan WFIPS cells show the Fire Plain where the dark blue cells were burned by more FSIM fires than the cyan cells.

### Focus Layers in WFIPS

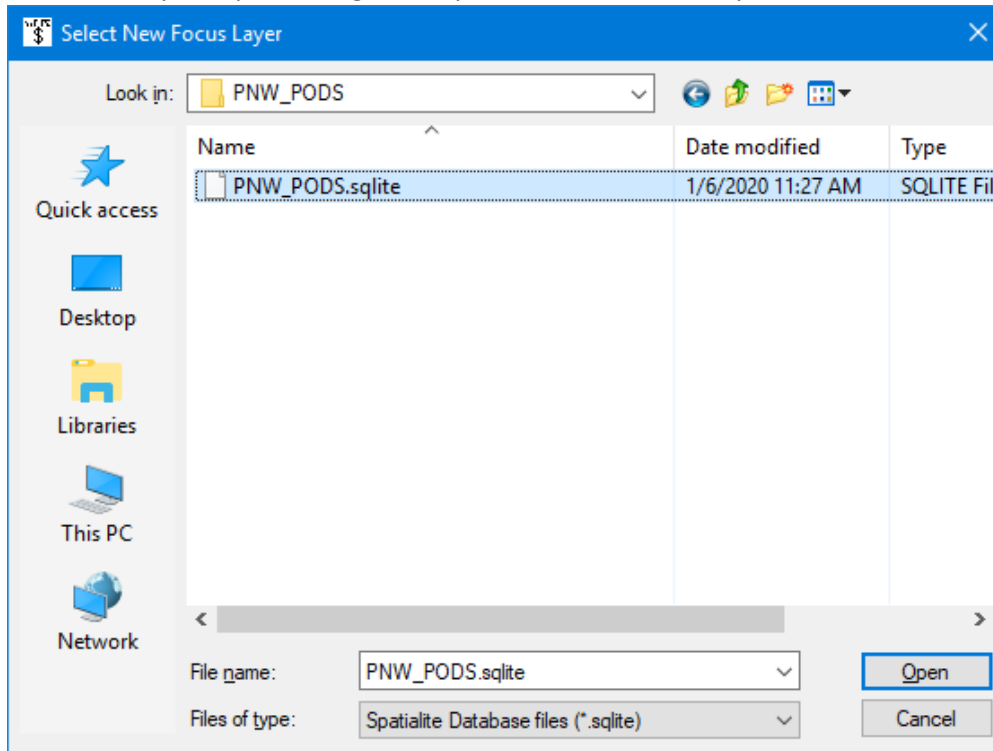
WFIPS provides spatial layers that define areas that might be of interest for users. These areas include Geographic Areas, States, FPU's and Forests. These available spatial layers may not delineate the areas that users are interested in so WFIPS allows users to add spatial layers that define areas that are of interest to them, "Focus Layers". These Focus Layers can be used to view fire history information, view fire sheds, and fire plains, run analyses and view WFIPS results. (Note: currently working on implementing the last two of this list).

The spatial layers that can be added to WFIPS can be a Spatiallite Database file or a Shape file. When a shape file is loaded the information is converted to a Spatiallite Database file so it can be loaded more quickly in the future.

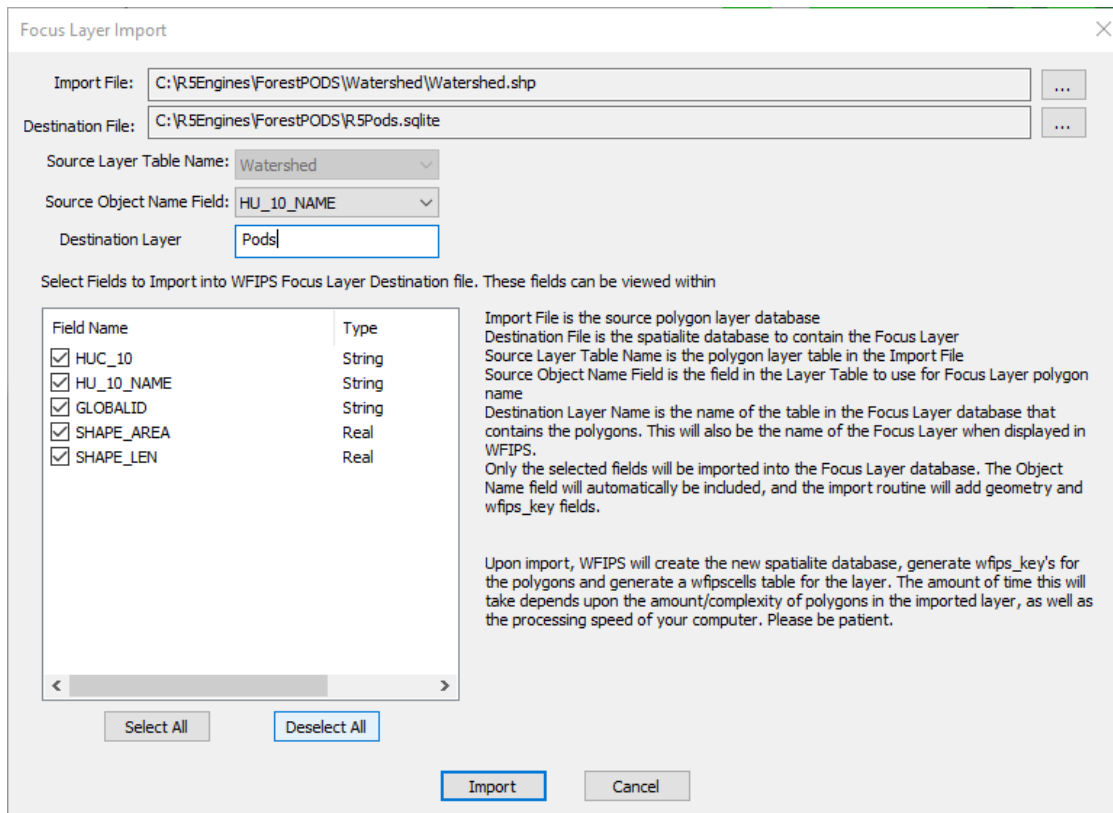
To load a Focus Layer right click on "Focus Layer" in the WFIPS tree and select "New Focus Layer"



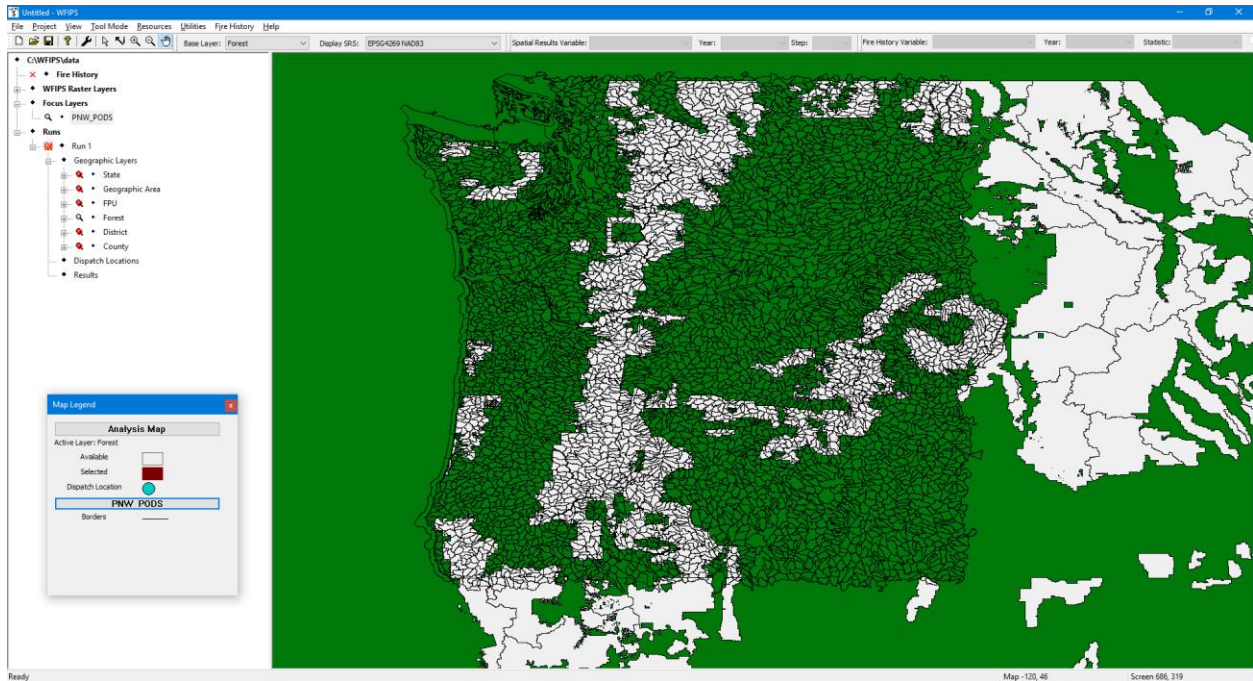
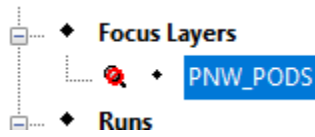
The Focus Layer Import dialog allows you to select a Focus Layer for use



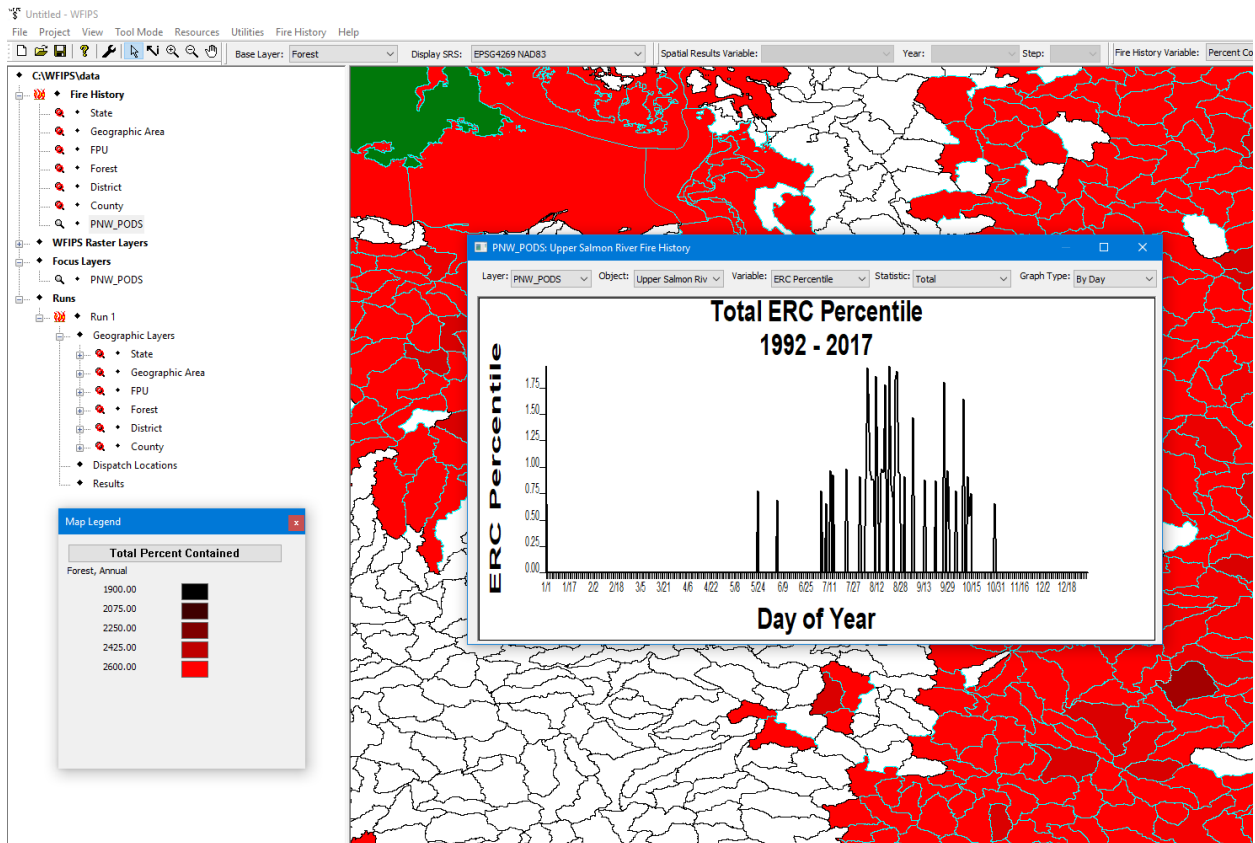
Or import the shapes and data contained in a shape file and save it as a spatialite file.



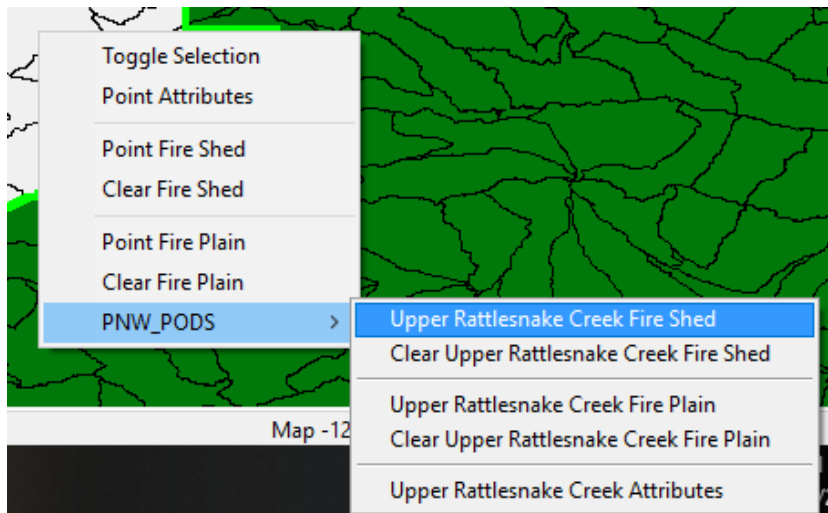
To view and use the Focus Layer double click on the Focus Layer Name in the WFIPS tree.

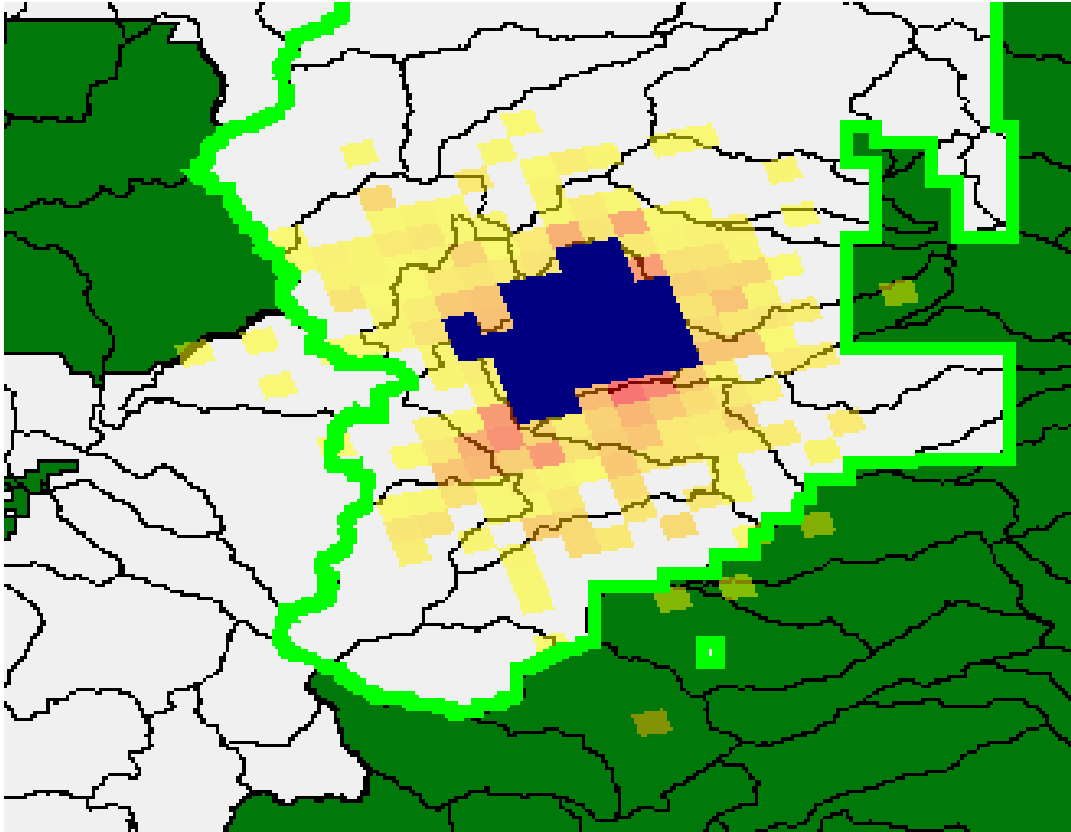


When Fire History is loaded the Focus layer will be added to the WFIPS tree for Fire History and can be used the same as any of the layers provided.



After you leave Fire History by clicking on “Runs” in the WFIPS tree you can view Fires Sheds and Fire Plains using the Focus Layer to define areas. Right click on any of the areas in the Focus layer, select the Focus Layer Name then select the desired action.

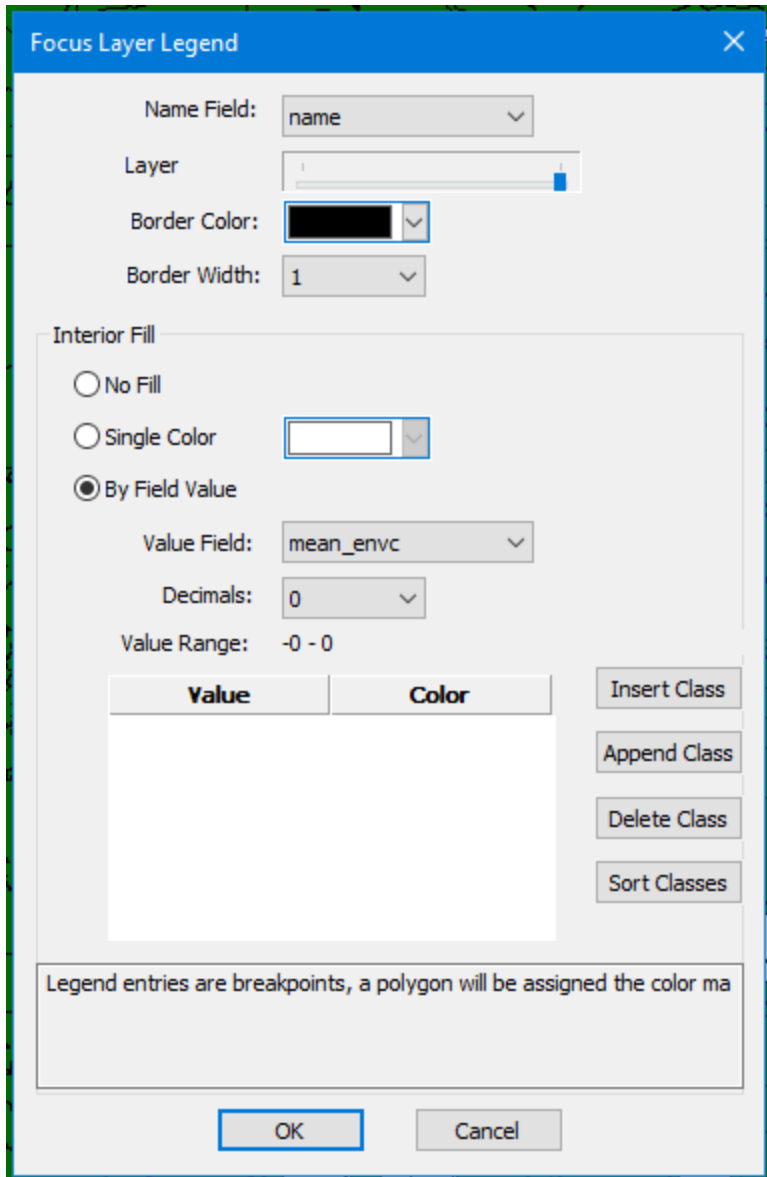




Multiple Fire Sheds and Fire Plains can be displayed simultaneously. They can be cleared en mass by selecting “Clear Fire Shed” or “Clear Fire Plain”, or cleared individually under the Focus Layer option.

You can also modify the legend for a Focus Layer by clicking on the Focus Layer name in the Map Legend.





.....More to Come.